

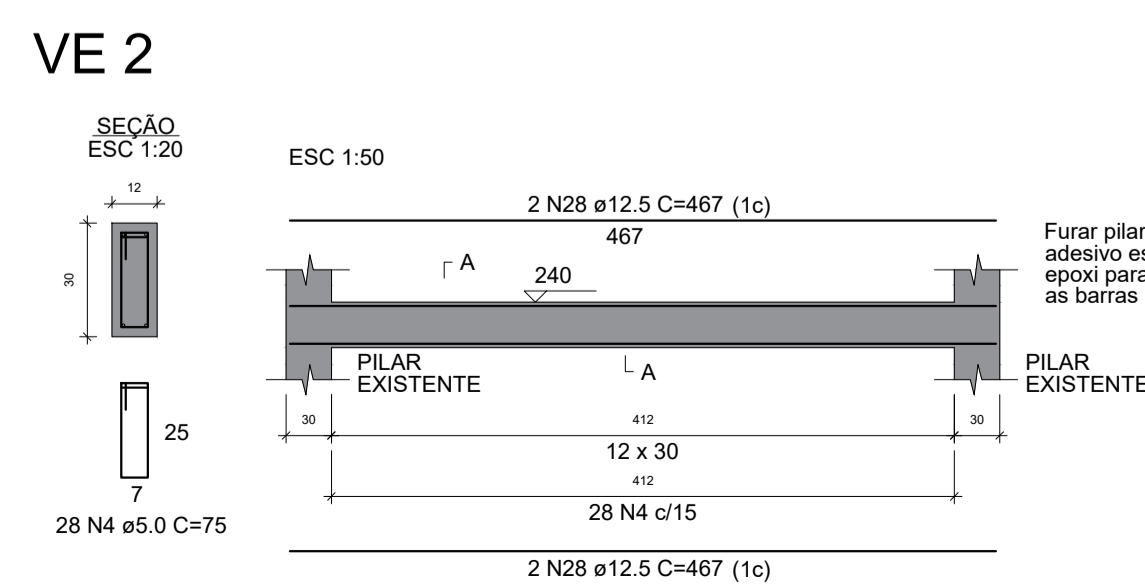
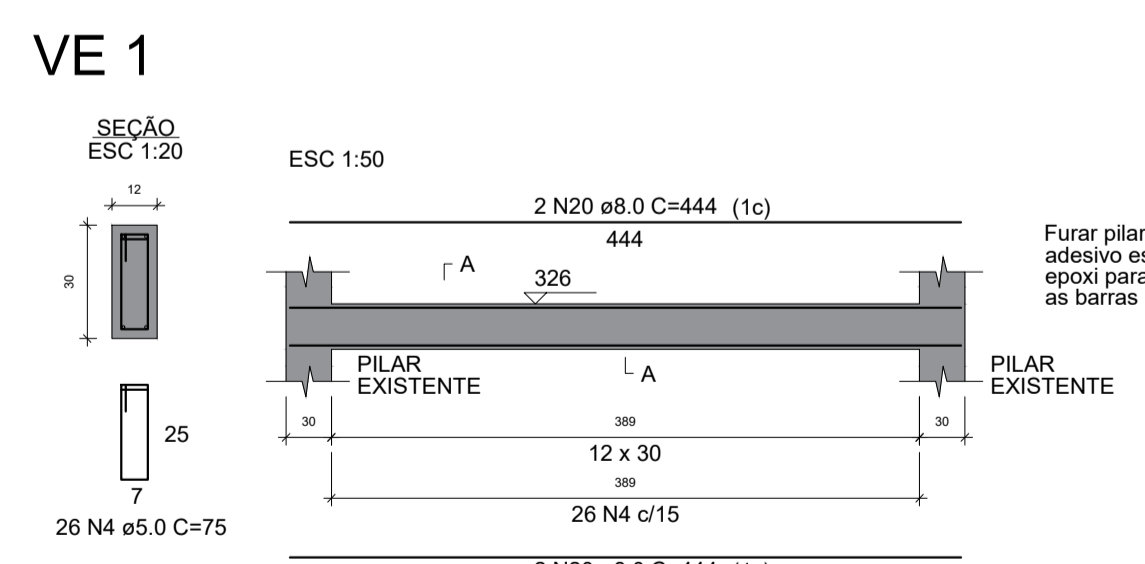
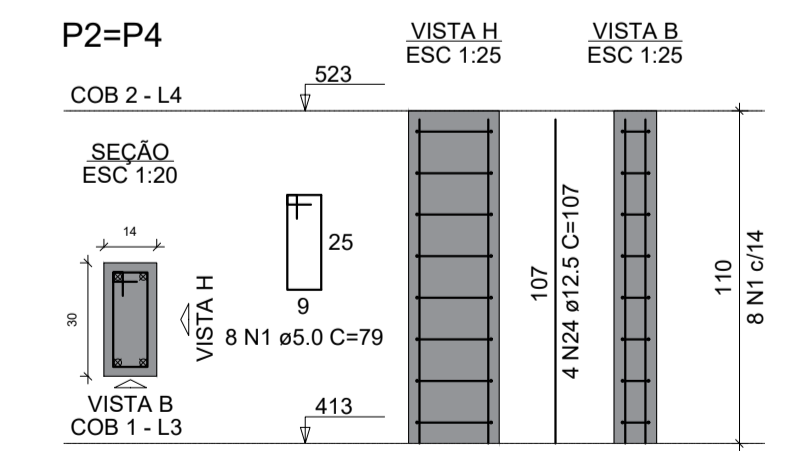
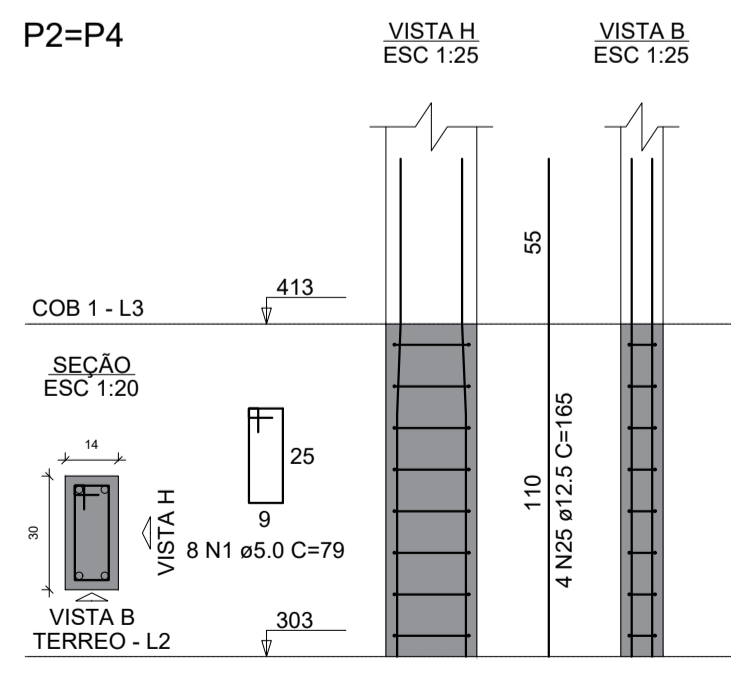
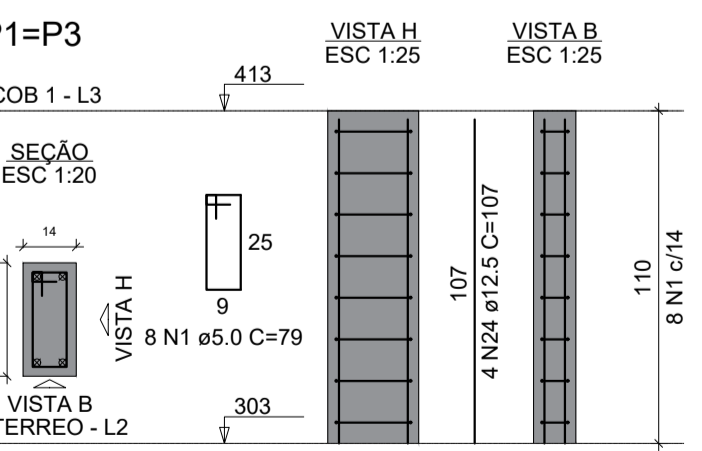
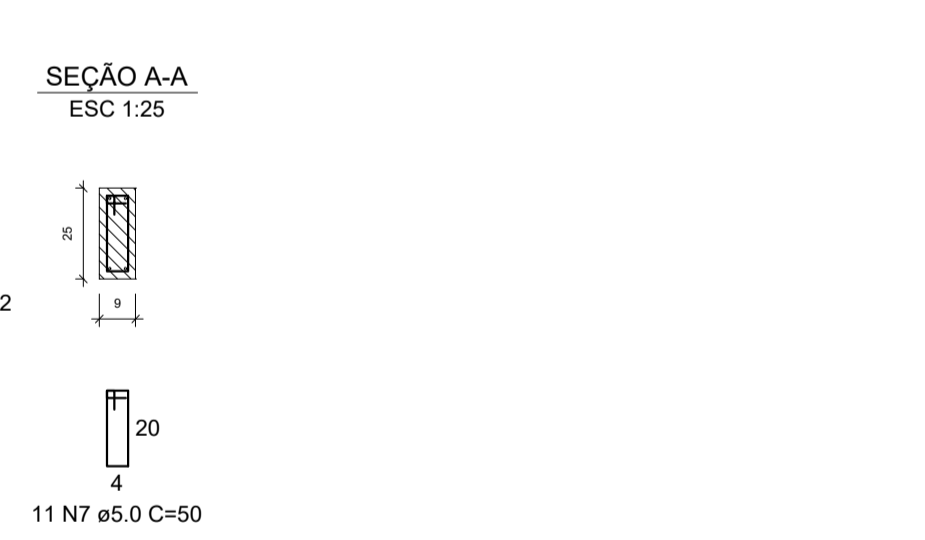
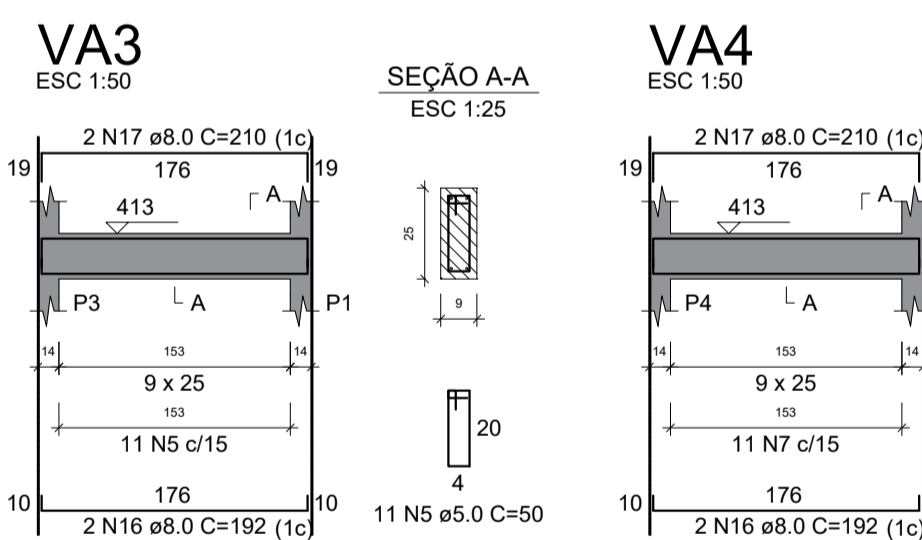
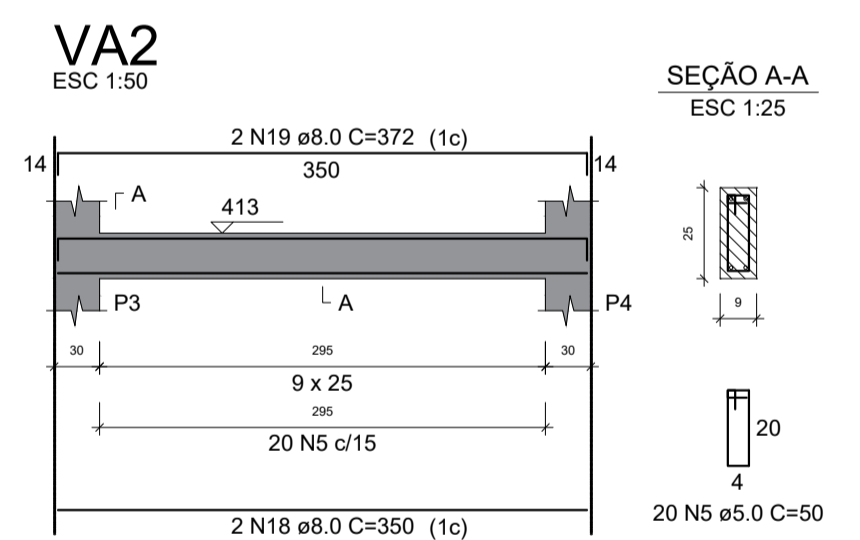
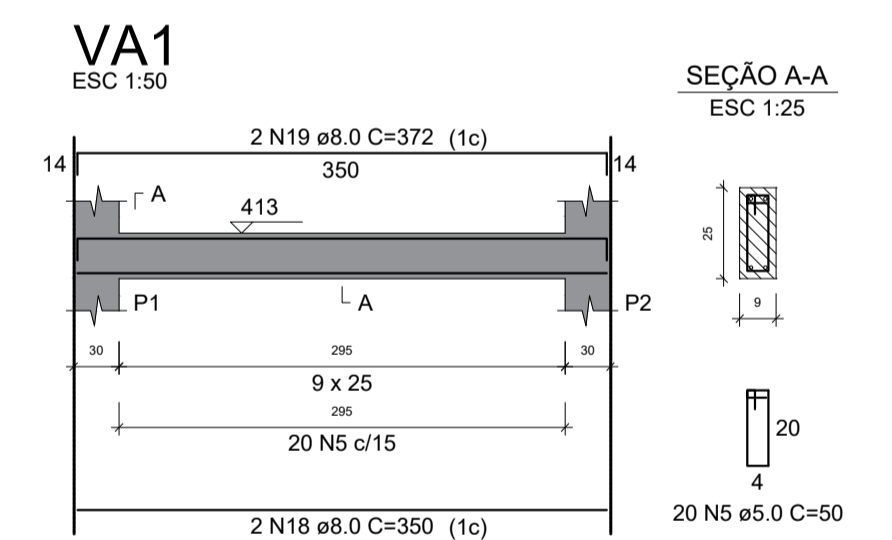
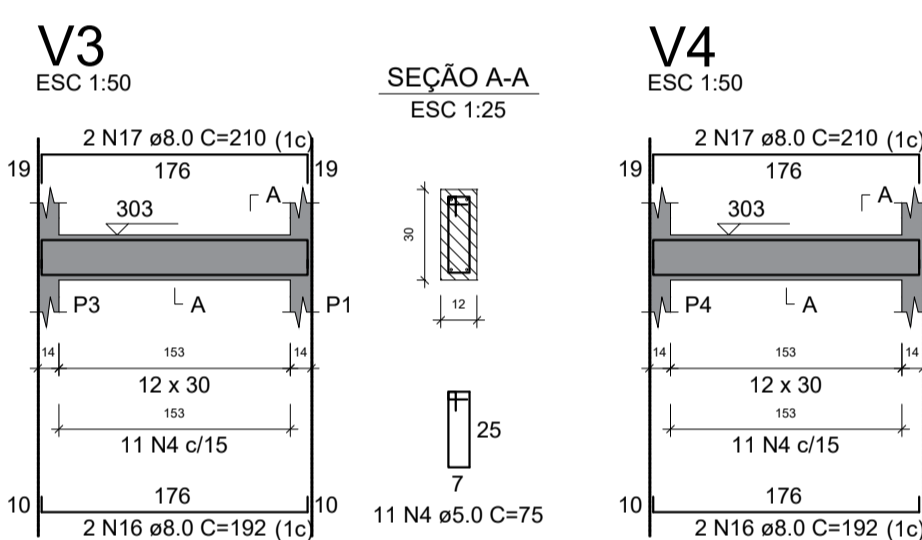
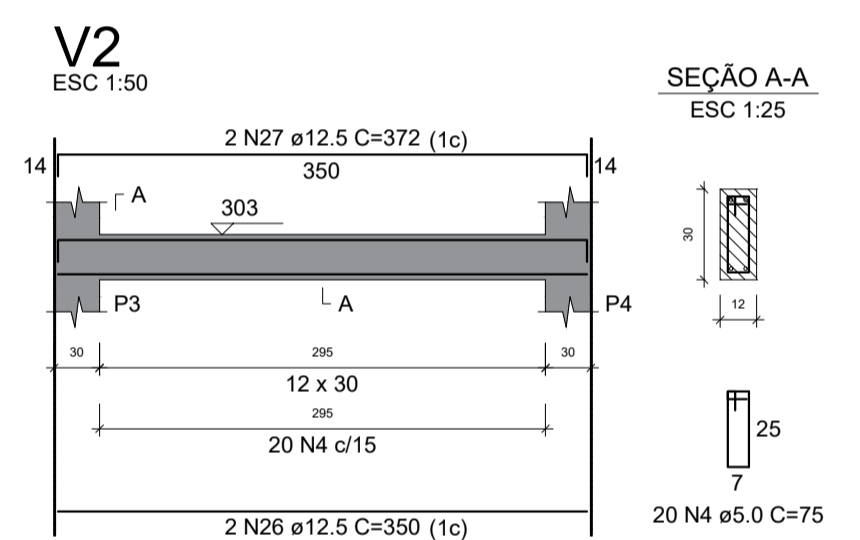
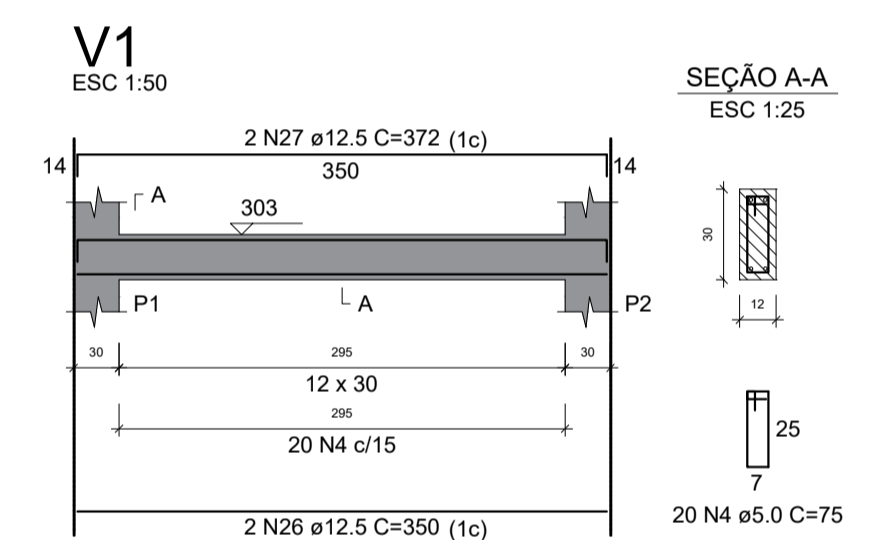
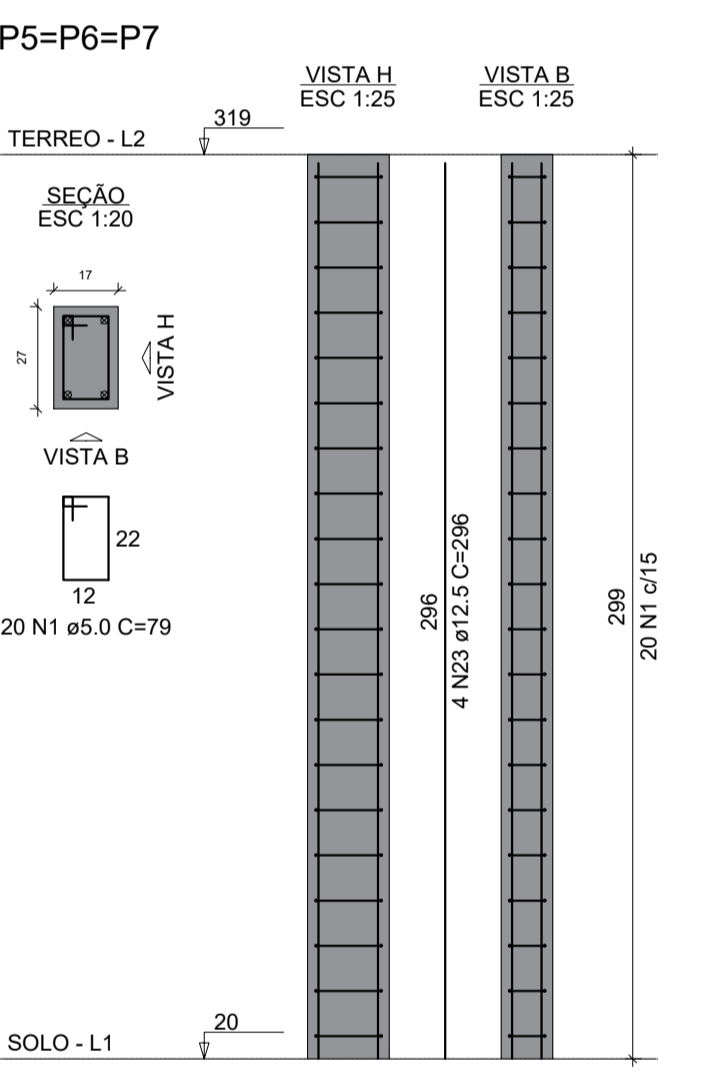
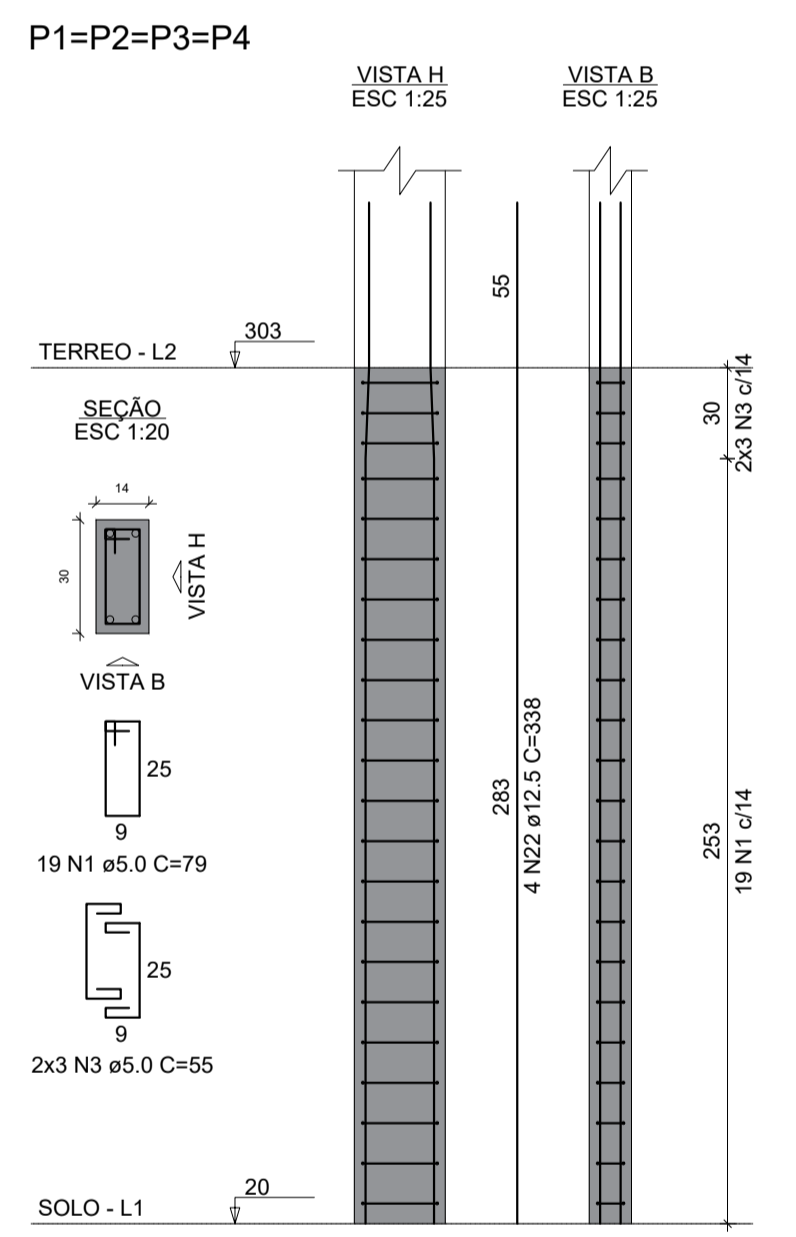
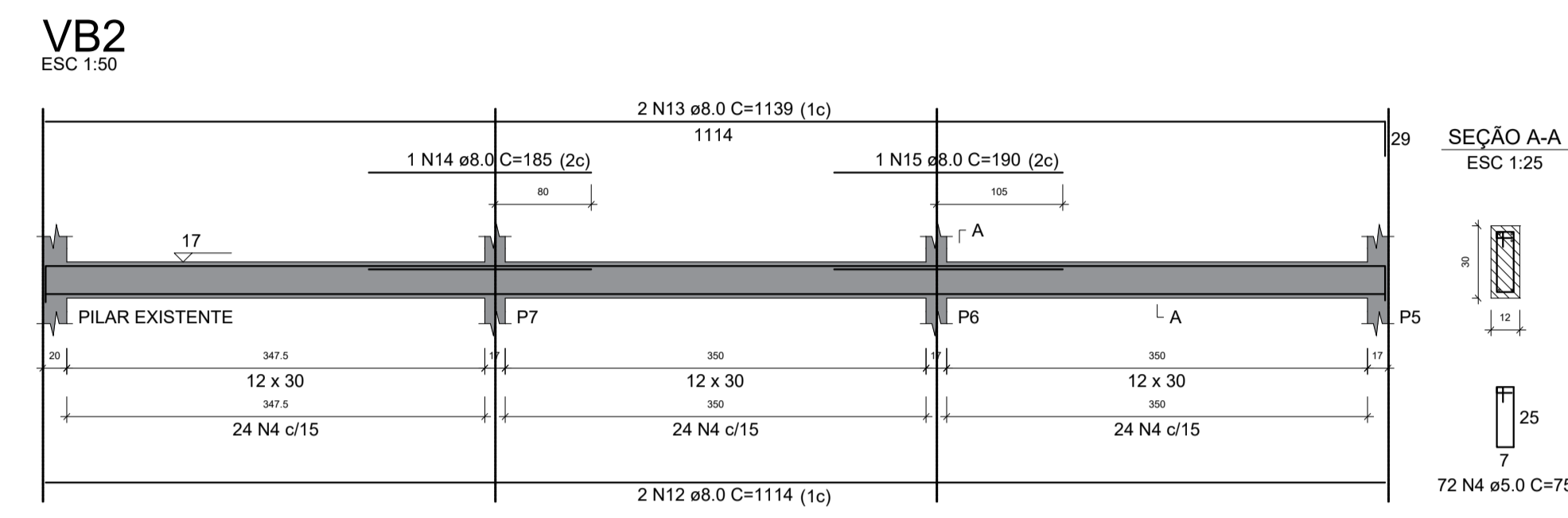
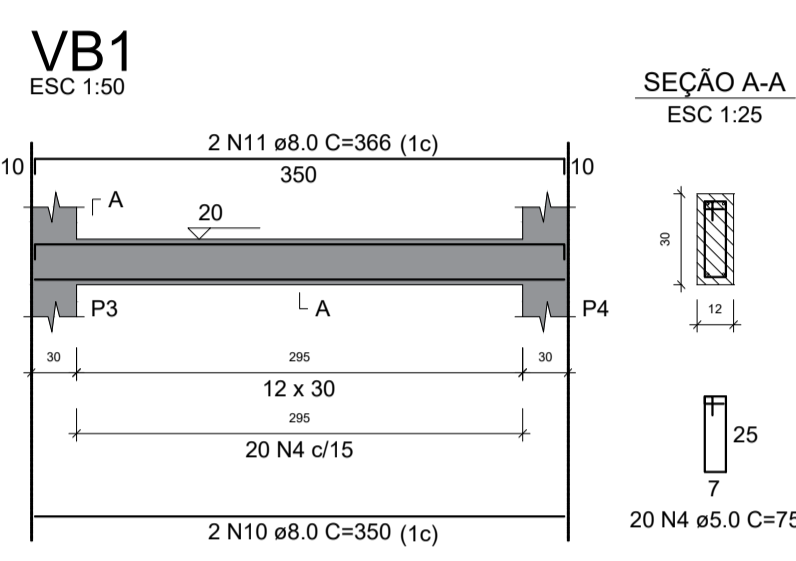
RELAÇÃO DO AÇO

AÇO	N	DIAM (mm)	QUANT	C.UNIT (cm)	C.TOTAL (cm)
CA60	1	5.0	204	79	16116
	2	5.0	24	58	1392
	3	5.0	24	55	1320
	4	5.0	208	75	15800
	5	5.0	62	50	3100
	6	8.0	36	104	3744
	7	8.0	28	124	3472
CA50	8	8.0	18	99	1782
	9	8.0	18	109	1962
	10	8.0	2	350	700
	11	8.0	2	366	732
	12	8.0	2	1114	2228
	13	8.0	2	1139	2278
	14	8.0	1	185	185
	15	8.0	1	190	190
	16	8.0	8	192	1536
	17	8.0	8	210	1680
	18	8.0	4	350	1400
	19	8.0	4	372	1488
	20	8.0	4	444	1776
	21	12.5	28	128	3584
	22	12.5	16	338	5408
	23	12.5	12	296	3552
	24	12.5	16	107	1712
	25	12.5	8	165	1320
	26	12.5	4	350	1400
	27	12.5	4	372	1488
	28	12.5	4	467	1868

RESUMO DO AÇO

AÇO	DIAM (mm)	C.TOTAL (m)	PESO (kg)
CA50	8.0	251.53	89.24
CA60	12.5	203.32	195.86
CA60	5.0	375.28	57.84
PESO TOTAL (kg)			
CA50			295.1
CA60			57.84

Volume de concreto (C-20) = 4.12 m³
Área de forma = 49.14 m²



Legenda das vigas

- VB - Viga Baldrame
- V - Viga
- VA - Viga de Amarração
- VE - Verga
- VP - Verga Pré-moldada
- CV - Contra-verga Pré-moldada

Fck = 20 MPa
Cobrimento = 2,5 cm para superestrutura
Cobrimento = 5,0 cm para sapatas
Dimensão máxima do agregado = 19 mm
Obs.: Fazer contra-flecha de 1 cm para as vergas moldadas in-loco

PROFESSOR TÉCNICO	VICTOR VINÍCIUS RÊGO MIRANDA	OBRA	RESTAURAÇÃO, REFORMA E AMPLIAÇÃO DE ESTRUTURA FÍSICA EXISTENTE PARA IMPLANTAÇÃO DO ATERRIO CONTROLADO
DISTINGUIDO	VICTOR VINÍCIUS RÊGO MIRANDA	PROJETO	SÍTIO MALHADA DA AREIA - PAU DOS FERROS/RN
PROPRIETÁRIO	PREFEITURA DE PAU DOS FERROS	PROJETO	PROJETO ESTRUTURAL
ÁREA	221,71 m²	DATA	FEVEREIRO/2019
ESCALA	INDICADA	FRENTEIRA	02/02

SEPLAN
2.00002.0 - 2.00002.0 - 2.00002.0