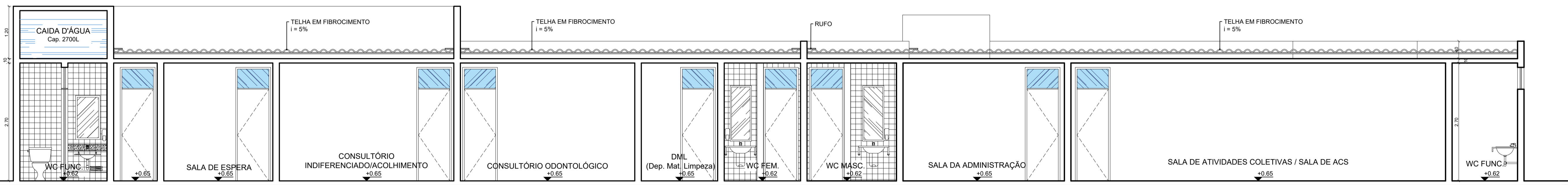
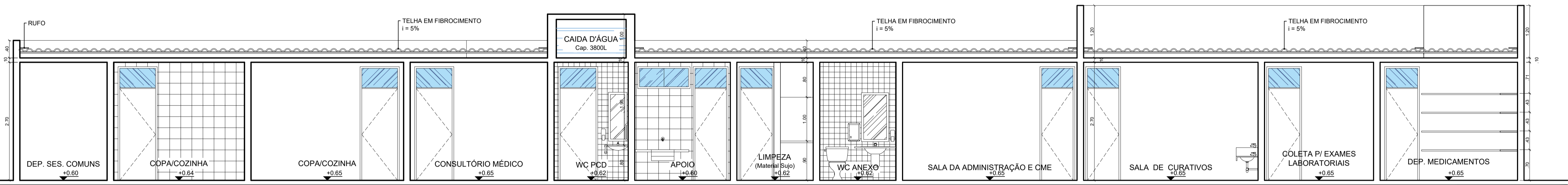


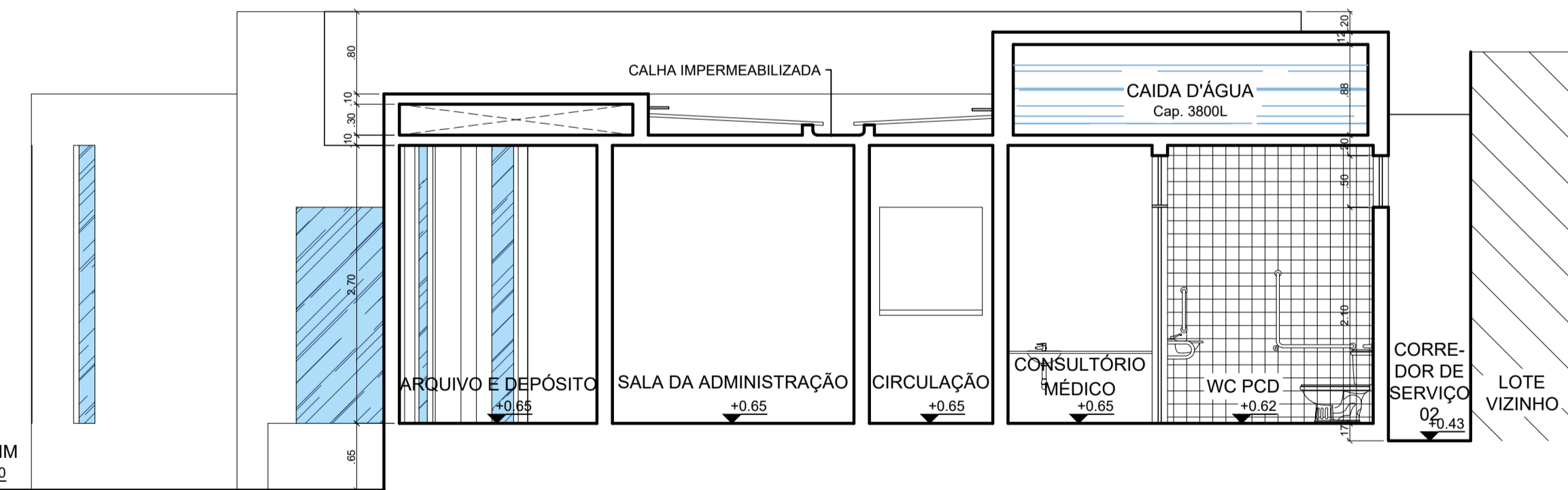
FACHADA OESTE
escala 1/50



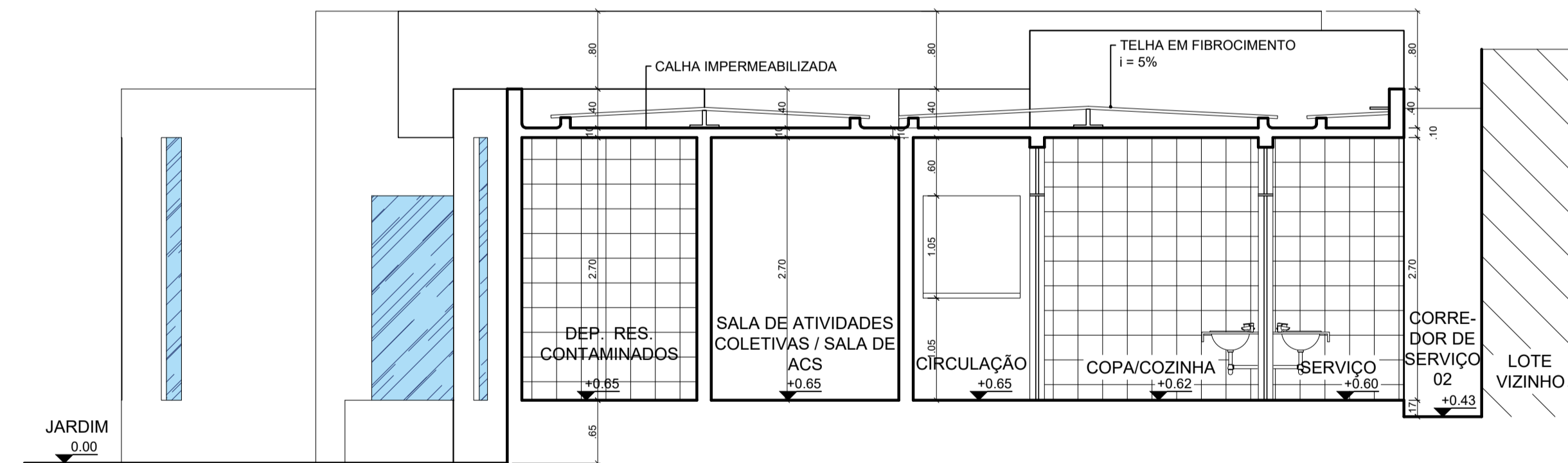
CORTE AA
escala 1/50



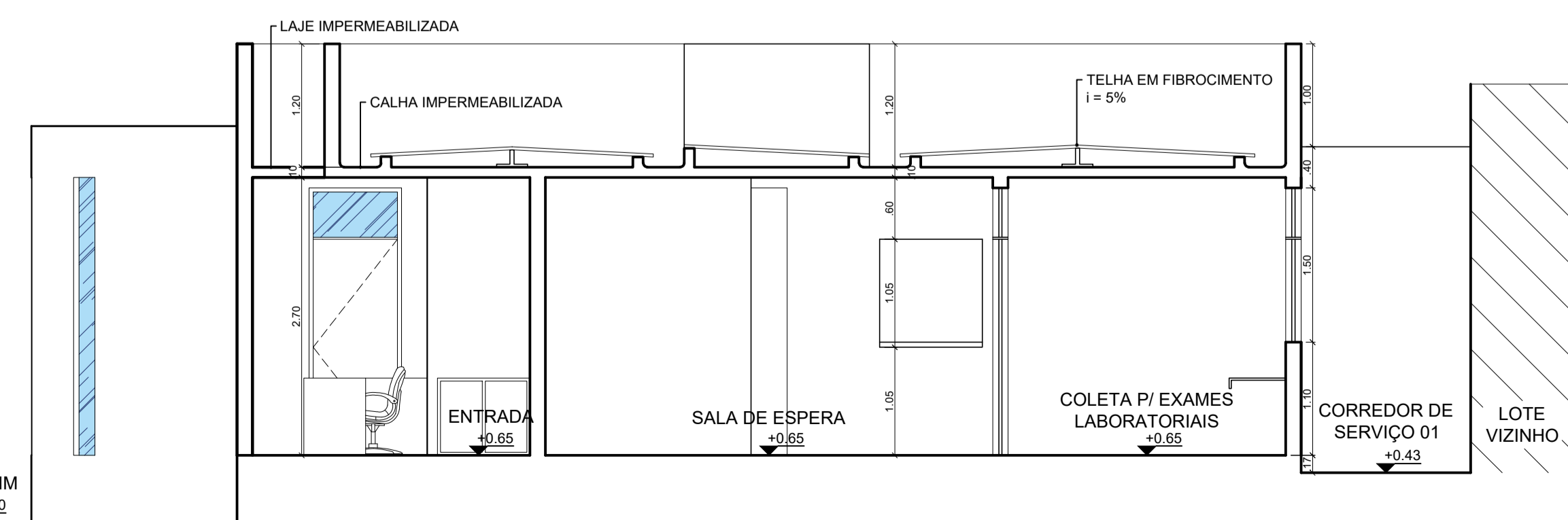
CORTE BB
escala 1/50



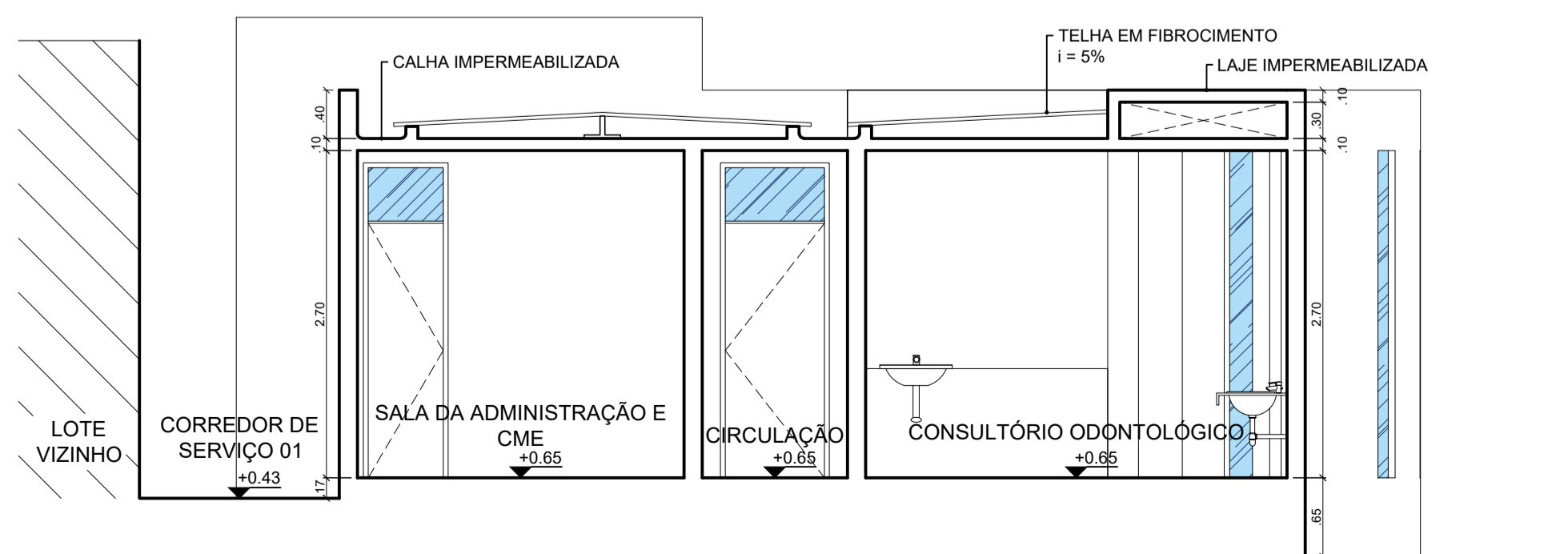
CORTE EE
escala 1/50



CORTE FF
escala 1/50



CORTE CC
escala 1/50



CORTE DD
escala 1/50

PROJETADEIRO TÉCNICO LUCYVAN SÉRGIO - CAU: 000A48324-9	DESENHADOR RAFAELA ALMEIDA	PROJETO AMPLIAÇÃO UBS VEREADOR JOÃO QUEIROZ DE SOUSA	LOCAL R. EXPEDITO PINHEIRO, N 100, BAIRRO PARAISO, PAU DOS FERROS/RN
CLIENTE PREFEITURA DE PAU DOS FERROS	ÁREA 156,41m²	REVISÃO 01	DATA ABRIL / 2019
		PROJETO CORTES: AA, BB, CC, DD, EE E FF	FRONTEIRA 02 / 03

